



## QUANTIX™ RECON

Quantix™ Recon is a powerful, simple-to-use UAV that delivers rapid, automated reconnaissance and hands-free data collection. Mapping and scouting tasks are effortless with its fully-automated takeoff, flight and landing functions—even first-time users can successfully operate it. With its Radio Frequency (RF) Silent Mode, Quantix Recon flies undetected and undeterred by jammers to deliver accurate, up-to-date maps within minutes for quick mission planning and verification. Its on-board processing provides georeferenced, high-resolution imagery on the user's tablet as soon as Quantix Recon lands—no other devices, internet or software required. Due to its innovative hybrid design, Quantix Recon outperforms traditional quadcopters in range and efficiency. That means you can cover more ground faster and obtain aerial maps of remote, inaccessible areas and rapidly changing environments to ensure the safety of ground troops.

# Fully Automated Reconnaissance

QUANTIX™ RECON

## DISTINCTIONS

### MISSION COVERAGE



Area  
3.24 km<sup>2</sup>

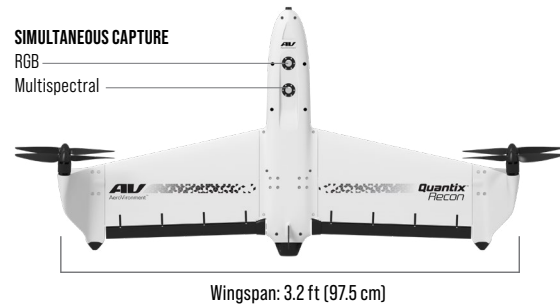


Linear  
20 km (out & back)

## SPECIFICATIONS

<b>MAX FLIGHT TIME</b>	45 min
<b>RANGE</b>	2 km radio limit (up to 40 km without radio link)
<b>MISSION COVERAGE</b>	Linear: 20 km roundtrip (out & back); 40 km one way max. Area: 3.24 km <sup>2</sup> max. @ 800 ft
<b>PROPULSION</b>	4 direct electric drive motors
<b>WEIGHT</b>	5 lb (2.3 kg)
<b>MAX ALTITUDE</b>	7,500 ft (2,286 m) MSL (Density Altitude)
<b>WIND LIMIT</b>	20 mph (9 m/s)
<b>DATA STORAGE</b>	On-board SD card
<b>COMMUNICATIONS</b>	900 MHz Encrypted & wifi
<b>NAVIGATION</b>	Automatic navigation—Area, Waypoint, Linear
<b>TEMPERATURE</b>	0-120 °F (-17-49 °C)
<b>LAUNCH AND RECOVERY</b>	Vertical takeoff and landing

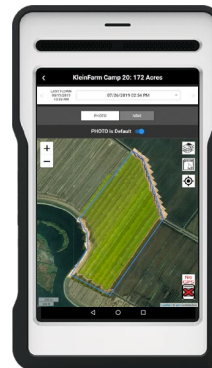
SENSORS	RGB	MULTISPECTRAL
<b>SENSORS</b>	18 MP	18 MP
<b>IMAGE SIZE</b>	4864x3648 px	2432x1824 px
<b>CAPTURE RATE</b>	Automatically adjusted to maintain overlap	Automatically adjusted to maintain overlap
<b>OVERLAP</b>	85% front, 60% side	85% front, 60% side
<b>GSD (GROUND SAMPLING DISTANCE)</b>		
@ 800 ft (243.8 m)	1.9 in (5 cm)	3.9 in (10.1 cm)
@ 600 ft (182.8 m)	1.4 in (3.8 cm)	2.1 in (7.6 cm)
@ 360 ft (109.7 m)	1 in (2.5 cm)	2 in (5 cm)
@ 265 ft (80.7 m)	0.7 in (1.8 cm)	1.4 in (3.6 cm)
@ 150 ft (45.7 m)	0.4 in (1 cm)	0.8 in (2 cm)
<b>SINGLE IMAGE AREA</b>		
@ 800 ft (243.8 m)	14.2 acres (0.057 km <sup>2</sup> )	14.2 acres (0.057 km <sup>2</sup> )
@ 600 ft (182.8 m)	8.0 acres (0.032 km <sup>2</sup> )	8.0 acres (0.032 km <sup>2</sup> )
@ 360 ft (109.7 m)	2.9 acres (0.011 km <sup>2</sup> )	2.9 acres (0.011 km <sup>2</sup> )
@ 265 ft (80.7 m)	1.6 acres (0.006 km <sup>2</sup> )	1.6 acres (0.006 km <sup>2</sup> )
@ 150 ft (45.7 m)	0.5 acres (0.0002 km <sup>2</sup> )	0.5 acres (0.0002 km <sup>2</sup> )



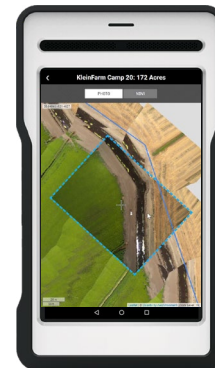
## KEY FEATURES

- » Fully automated—hands free data collection
- » View high-resolution, georeferenced images instantly on the operating tablet upon landing
- » RF Silent mode—prevent detection & jamming
- » Flexible mapping modes—Area, Waypoint, Linear
- » Ready to fly—deploy within 5 minutes

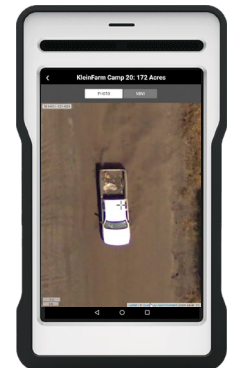
## QUICK-LOOK™ HD



First View: Quick-Look



Second View: Clicking a spot pulls up georeferenced high-resolution images



Third View: Pinch and Zoom Navigation to see every detail images